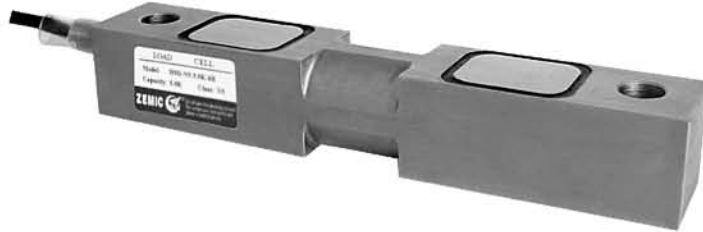
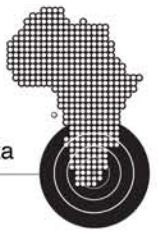


# RICHTER SCALE

## H9D

Visit [www.load-cell.co.za](http://www.load-cell.co.za) • T +27 (0)12 386 3065 • E: [loadcells@richterscale.co.za](mailto:loadcells@richterscale.co.za)



- H9D load cells are available in the capacities 1Klb~75Klb.
- Alloy steel construction, potted by adhesive inside, oil proof, waterproof, anti-corrosive gas and medium making it suitable for all kinds of environments.
- Dual shear beam, suitable for electronic truck scales, automobile testing facilities, track scales, tank scales and other electronic weighing devices.

### Features

- Capacity 1Klb~75Klb
- High accuracy
- Alloy steel construction
- Easy installation and reliable performance
- Low profile

### Accessories

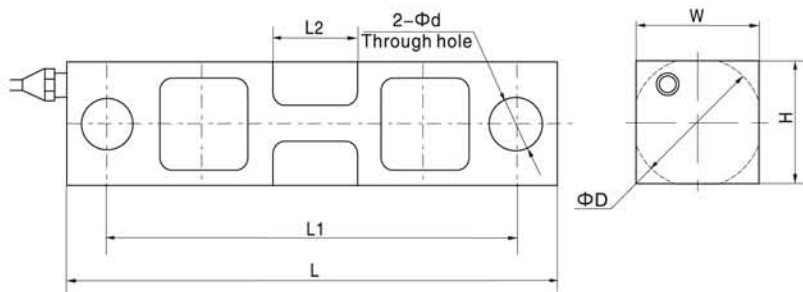
- HM-9-403 • BM-9-404



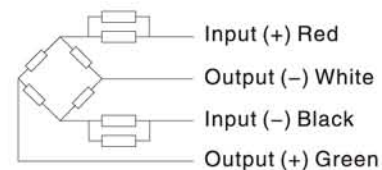
### Specifications

Capacity	Klb	1/1.5/2/2.5/4/5/10/15/20/25/35/50/75				
Accuracy		C2	C3	C4	A5M	B10M
Approvals			OIML R60 C3	OIML R60 C4	III 5000 Multiple	IIIL 10000 Multiple
Maximum number of verification intervals	n <sub>max</sub>	2000	3000	4000	5000	10000
Minimum load cell verification interval	v <sub>min</sub>	E <sub>max</sub> /5000	E <sub>max</sub> /10000	E <sub>max</sub> /14000	E <sub>max</sub> /15000	E <sub>max</sub> /10000
Combined error	(%FS)	≤ ±0.030	≤ ±0.020	≤ ±0.018	≤ ±0.026	≤ ±0.050
Creep	(%FS/30min)	≤ ±0.024	≤ ±0.016	≤ ±0.012	≤ ±0.017	≤ ±0.040
Temperature effect on sensitivity	(%FS/10°C)	≤ ±0.017	≤ ±0.011	≤ ±0.009	≤ ±0.013	≤ ±0.040
Temperature effect on zero	(%FS/10°C)	≤ ±0.023	≤ ±0.015	≤ ±0.010	≤ ±0.014	≤ ±0.020
Output sensitivity	(mv/v)	3.0±0.008				
Input resistance	(Ω)	700±7				
Output resistance	(Ω)	703±4				
Insulation resistance	(MΩ)	≥5000(50VDC)				
Zero balance	(%FS)	1.0				
Temperature, compensated	(°C)	-10~+40				
Temperature, operating	(°C)	-35~+65				
Excitation, recommended	(V)	5~12(DC)				
Excitation, max	(V)	18(DC)				
Safe overload	(%FS)	150				
Ultimate overload	(%FS)	300				

### Outline Dimension mm(inch)



Dimension Capacity	L	L1	L2	ΦD	Φd	H	W
1~5	190.5 (7.5)	158.75 (6.25)	30.48 (1.2)	Φ31.5 (1.24)	Φ12.7 (0.5)	30.99 (1.22)	30.99 (1.22)
10~35	222.25 (8.75)	190.5 (7.5)	41.15 (1.62)	Φ50.8 (2.0)	Φ20.57 (0.81)	49.15 (1.94)	36.45 (1.44)
50~75	342.9 (13.5)	292.1 (11.5)	82.55 (3.25)	Φ75.95 (2.99)	Φ33.32 (1.31)	74.68 (2.94)	61.98 (2.44)



### Wiring:

Adopt shielded, 4 conductor cable.  
Cable diameter: Φ5mm  
Standard cable length: 6m