

BM24R



- BM24R load cells are available in the capacities 10t~100t.
- Stainless steel construction, hermetically welded, oil proof, waterproof, anti-corrosive gas and medium making it suitable for all kinds of environments.
- Spoke type, suitable for electronic truck scales, automobile testing facilities, hopper scales and other electronic weighing devices and force measuring fields, also can be used as standard load cells.

Features

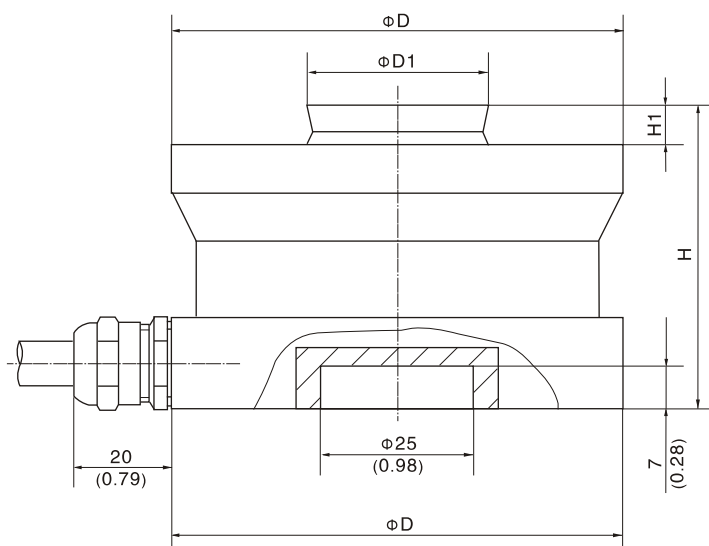
- Capacity 10t~100t
- High accuracy
- Stainless steel construction
- Easy installation and reliable performance



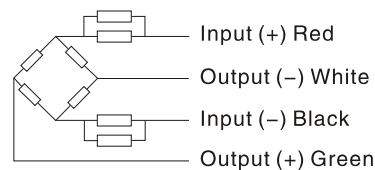
Specifications

Capacity	t	10/20/47/68/100			
Accuracy		C2	C3	A5S	A5M
Maximum number of verification intervals	n _{max}	2000	3000	5000	5000
Minimum load cell verification interval	v _{min}	E _{max} /5000	E _{max} /10000	E _{max} /15000	E _{max} /15000
Combined error	(%FS)	≤ ±0.030	≤ ±0.020	≤ ±0.018	≤ ±0.026
Creep	(%FS/30min)	≤ ±0.024	≤ ±0.016	≤ ±0.012	≤ ±0.017
Temperature effect on sensitivity	(%FS/10°C)	≤ ±0.017	≤ ±0.011	≤ ±0.009	≤ ±0.013
Temperature effect on zero	(%FS/10°C)	≤ ±0.023	≤ ±0.015	≤ ±0.010	≤ ±0.014
Output sensitivity	(mv/v)	2.85±0.003			
Input resistance	(Ω)	4450±100			
Output resistance	(Ω)	4010±4			
Insulation resistance	(MΩ)	≥5000(50VDC)			
Zero balance	(%FS)	1.0			
Temperature, compensated	(°C)	-10~+40			
Temperature, operating	(°C)	-35~+65			
Excitation, recommended	(V)	5~12(DC)			
Excitation, max	(V)	18(DC)			
Safe overload	(%FS)	150			
Ultimate overload	(%FS)	300			

Outline Dimension mm(inch)



Dimension Capacity	ΦD	ΦD1	H	H1
10t,20t	75 (2.95)	29.8 (1.17)	50 (1.97)	6.5 (0.26)
47t	130 (5.12)	59.8 (2.35)	75 (2.95)	14 (0.55)
68t	130 (5.12)	59.8 (2.35)	85 (3.35)	14 (0.55)
100t	150 (5.09)	69.8 (2.75)	90 (3.54)	16 (0.63)



Wiring:

Adopt shielded, 4 conductor cable: Φ5.0mm
Standard cable length: 12m